



95 Century Buildings Patriotic Place, St Helier, Jersey, JE2 3AF
£435,000

Patriotic Place, St Helier, JE2 3AF

A spacious two bedroom apartment situated on the third floor of this prestigious building. The accommodation is in excellent order with modern open plan living space. Unusually for this development, there is a separate eat-in kitchen, as well as two bathrooms. The apartment is ideally located for all town amenities and close to the beach at West Park. PARKING for 1 car in secure underground car park. No onward chain. Please note the apartment is currently tenanted and the photos were taken a few years ago. Currently let on a rolling basis @ £1,845.00 per mth Service charge £986 per quarter. Share Transfer

Kitchen

A spacious kitchen/diner with fitted cupboards at eye and base level with indesit washing machine, small dishwasher, baumatic electric oven and hob with fan over. Integrated fridge freezer. Antico tile flooring.

Lounge

A spacious lounge with wooden laminate flooring.

En-Suite Bedroom

Double bedroom with en-suite shower facilities, WC & WHB. Carpet as laid.

Bedroom

Double bedroom with Juliet balcony. Carpet as laid.

Bathroom

Bathroom with white WC, WHB and bath with shower over.

Viewing

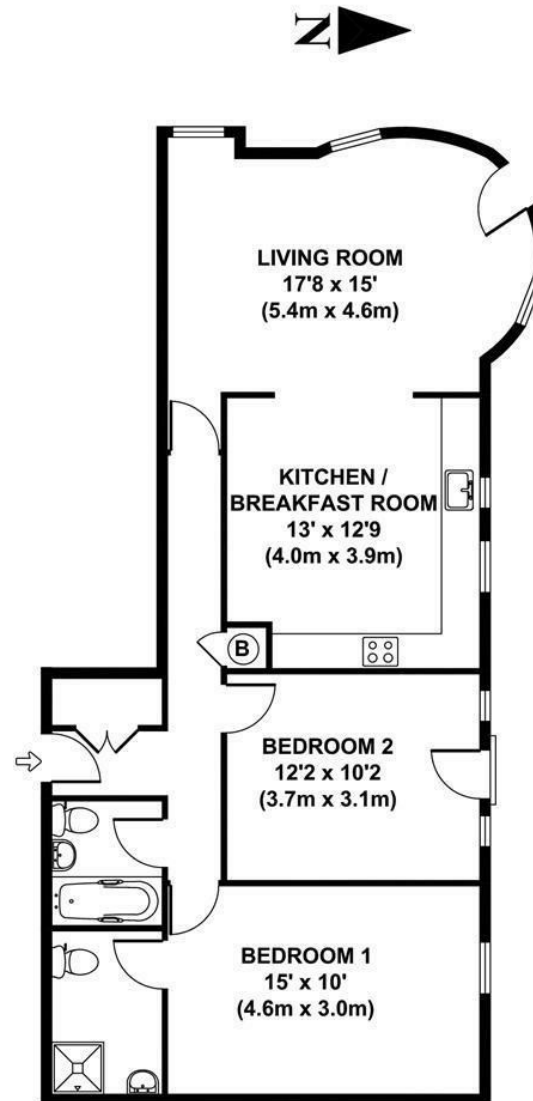
Please call Slomans, Sole Agents on 87 97 87. Please note that all areas and measurements given in these particulars are approximate and rounded. The text, photographs and floor plans are for general guidance only.

Anti Money Laundering Regulation

Once an offer is accepted and negotiations for the purchase of a property are entered into, the

prospective purchasers will be asked to produce photographic identification (passport or driving licence) and proof of residency documentation eg, a current utility bill together with confirmation of source of funds. This is in order for us to comply with the current Money Laundering Legislation





APPROX. GROSS INTERNAL FLOOR AREA 810 SQ FT / 75 SQ M

© Copyright Slomans 2007.

